



ジェイダブルシステム
JW-system co.,ltd.

Light efficiency:

89 Lumen/Watt

Light quality:

CRI: 92.2

Color temperature:

5888 K

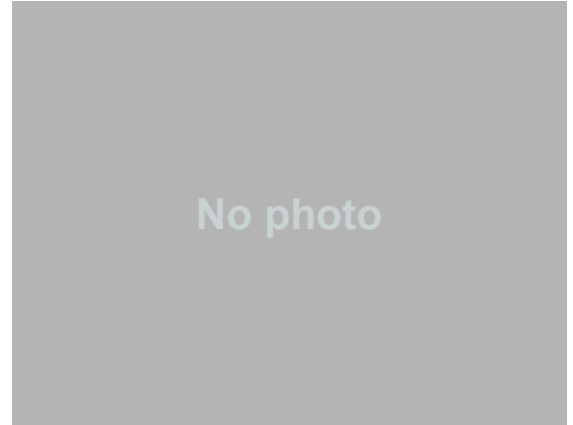
Output: 842 lm

Peak: 221 cd

Power: 9.5 W

24.0V @ 0.396A

12 PLANES



Product name:

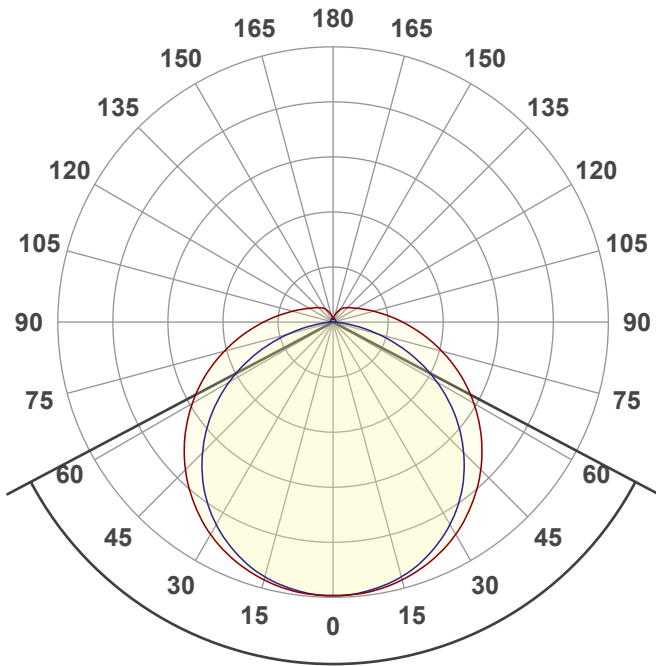
**LED lightbar F308 6000K
Diffuser LF1WA308VDB093**

Date and time:

2024/09/14 20:24:46

Item number:

LF1WA308VDB093



Beam angle

124.3°

Color

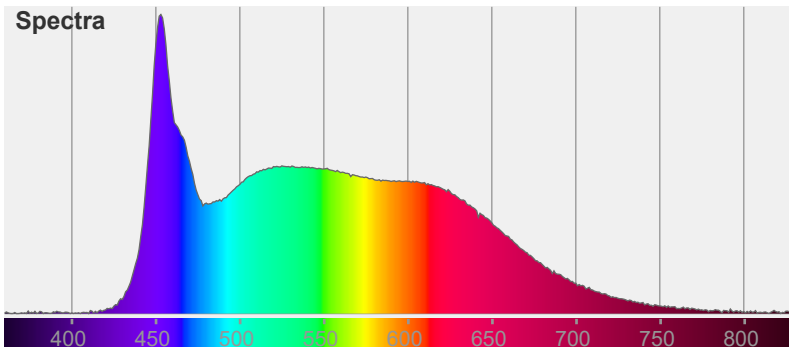


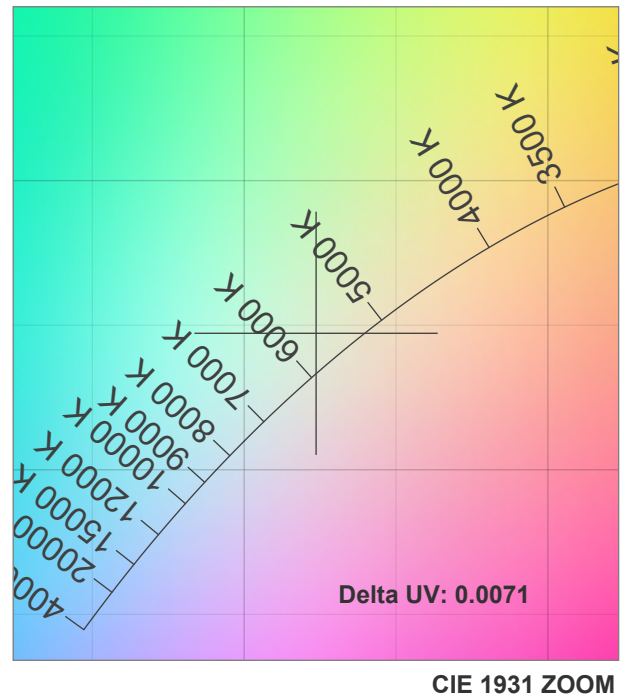
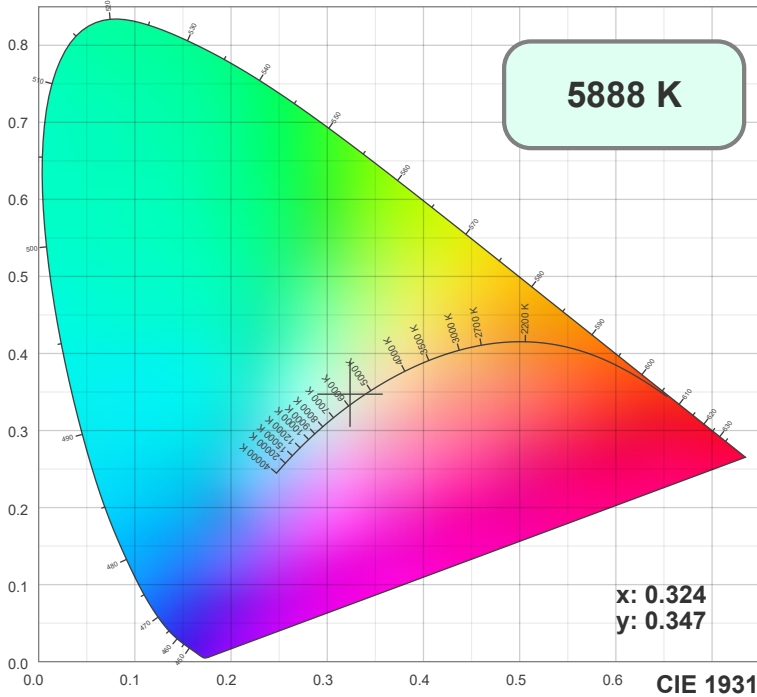
CIE1931

x: 0.324

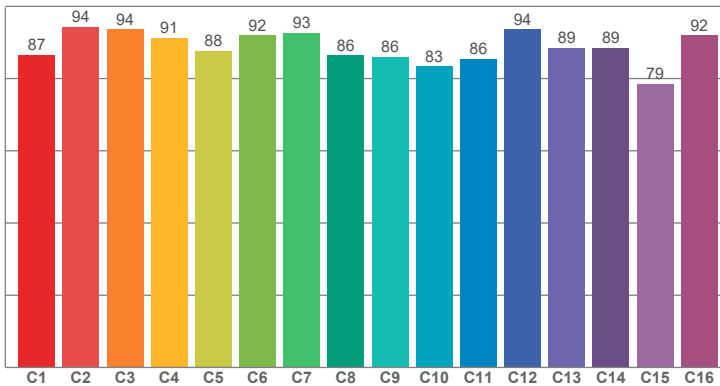
y: 0.347

Spectra

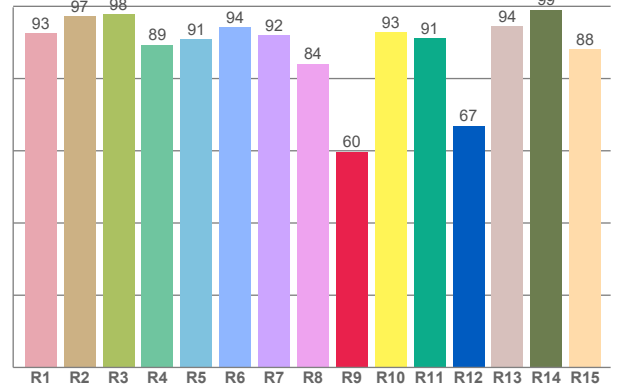




TM30: 88.7



CRI: 92.2 (R1-R8)



CRI R values, only R1-R8 are used to calculate final CRI value

R1	R2	R3	R4	R5	R6	R7	R8	R9	R10	R11	R12	R13	R14	R15
92.56	97.25	97.79	89.28	90.84	94.14	91.92	84.11	59.74	92.87	91.17	66.92	94.50	99.09	88.13

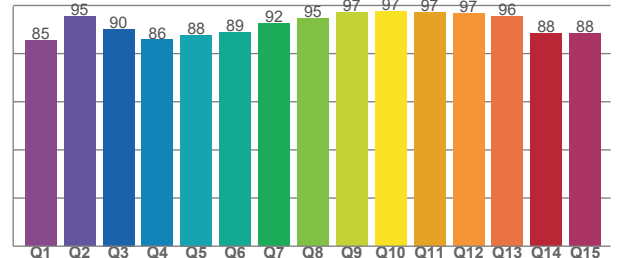
TM30 C values, 16 binned values out of total of 99 C values

C1	C2	C3	C4	C5	C6	C7	C8	C9	C10	C11	C12	C13	C14	C15	C16
86.61	94.34	93.63	91.28	87.64	91.94	92.69	86.47	85.99	83.42	85.50	93.65	88.51	88.53	78.55	91.95

CQS Q values

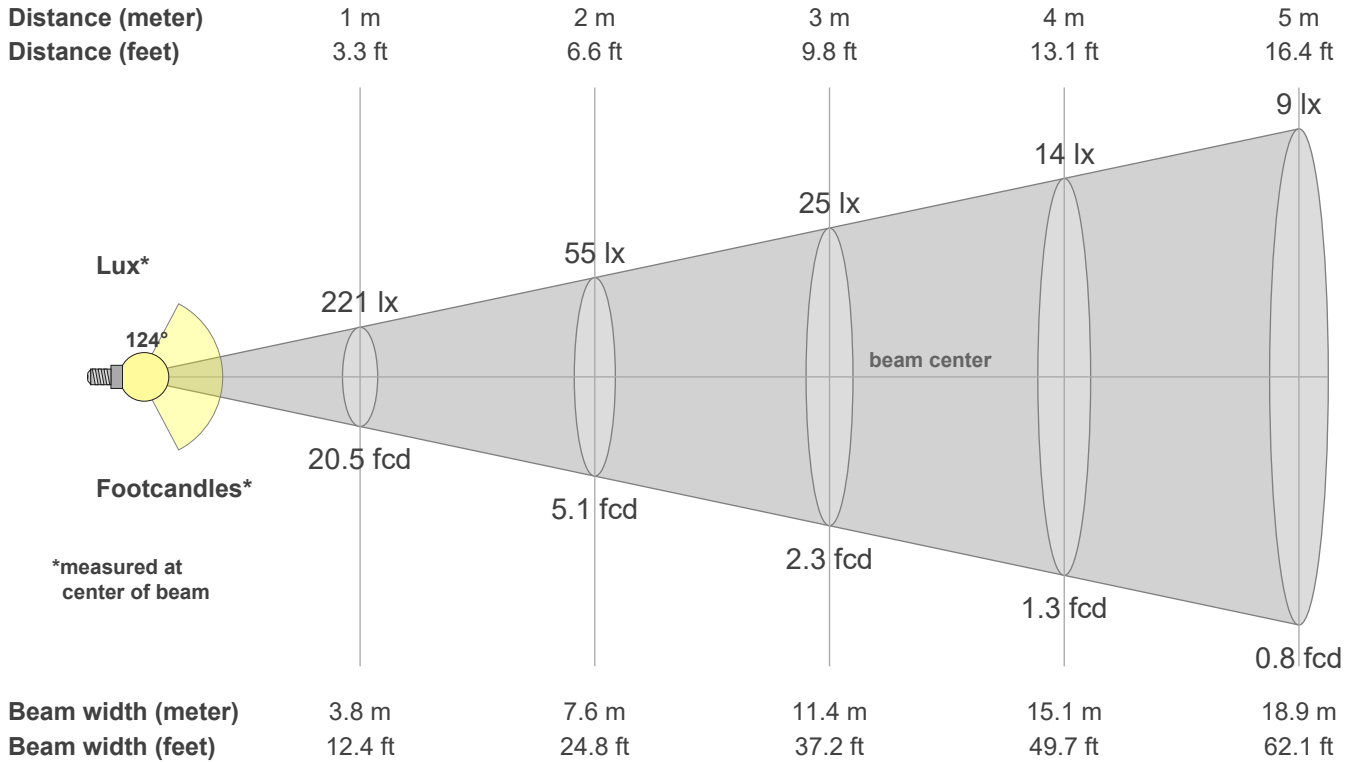
Q1	Q2	Q3	Q4	Q5	Q6	Q7	Q8	Q9	Q10	Q11	Q12	Q13	Q14	Q15
85.43	95.42	90.27	85.76	87.77	88.70	92.43	94.68	97.00	97.47	97.36	96.60	95.56	88.41	88.27

CQS: 91.0



Color parameters

CCT	CRI	CRI R9	TM30 Rf	TM30 Rg	CQS	x	y	u	v	Duv
5888 K	92.2	59.7	88.7	95.2	91.0	0.3	0.3	0.2	0.3	0.0038



Intensities in 0° c-plane

0°	9°	18°	27°	36°	45°	54°	63°	72°	81°	90°	99°	108°	117°	126°	135°	144°	153°	162°	171°
221	219	213	202	187	169	147	123	99	76	56	41	31	24	19	16	14	11	7	4
100%	99%	96%	92%	85%	76%	66%	56%	45%	34%	26%	19%	14%	11%	9%	7%	6%	5%	3%	2%

Intensities in 90° c-plane

0°	9°	18°	27°	36°	45°	54°	63°	72°	81°	90°	99°	108°	117°	126°	135°	144°	153°	162°	171°
221	218	209	195	175	149	119	85	50	17	3	2	2	2	2	3	3	3	3	3
100%	99%	95%	88%	79%	67%	54%	39%	23%	8%	1%	1%	1%	1%	1%	1%	1%	1%	1%	1%

Intensities in 180° c-plane

0°	9°	18°	27°	36°	45°	54°	63°	72°	81°	90°	99°	108°	117°	126°	135°	144°	153°	162°	171°
221	219	213	202	187	169	147	123	99	76	56	41	31	24	19	16	14	11	7	4
100%	99%	96%	92%	85%	76%	66%	56%	45%	34%	26%	19%	14%	11%	9%	7%	6%	5%	3%	2%

Intensities in 270° c-plane

0°	9°	18°	27°	36°	45°	54°	63°	72°	81°	90°	99°	108°	117°	126°	135°	144°	153°	162°	171°
221	218	209	195	175	149	119	85	50	17	3	2	2	2	2	3	3	3	3	3
100%	99%	95%	88%	79%	67%	54%	39%	23%	8%	1%	1%	1%	1%	1%	1%	1%	1%	1%	1%

Beam angle 50%	Field angle 10%	Cutoff angle 2.5%	Intensity ratio in 120° cone	Intensity ratio in 90° cone
124.3°	201.4°	289.2°	63.0%	41.7%