



ジェイダブルシステム
JW-system co.,ltd.

Light efficiency:

91 Lumen/Watt

Light quality:

CRI: 92.3

Color temperature:

3874 K

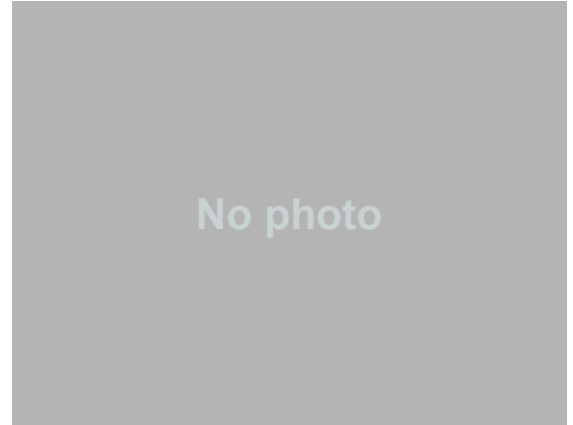
Output: 864 lm

Peak: 224 cd

Power: 9.5 W

24.0V @ 0.394A

12 PLANES



Product name:

LED lightbar F308 4000K

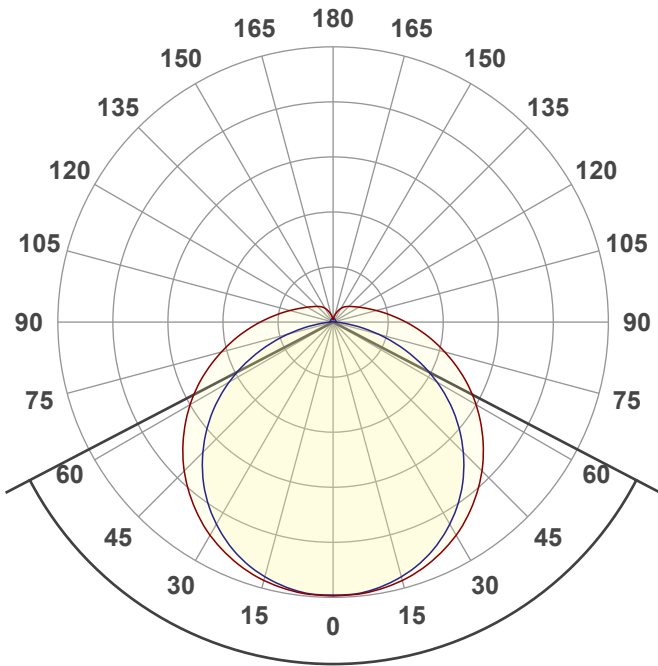
Diffuser LF1WB308VDB093

Date and time:

2024/09/14 19:46:18

Item number:

LF1WB308VDB093



Beam angle

124.9°

Color

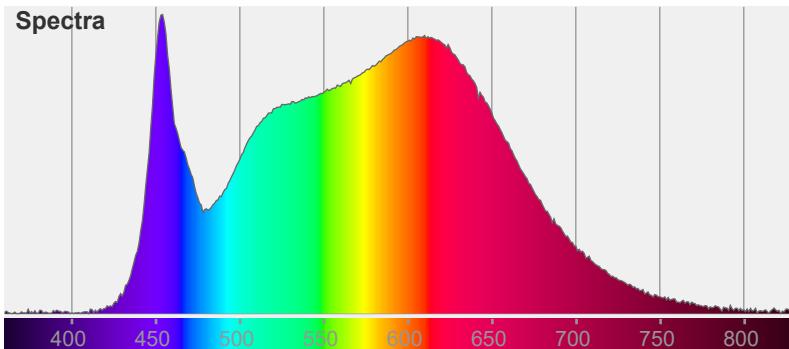


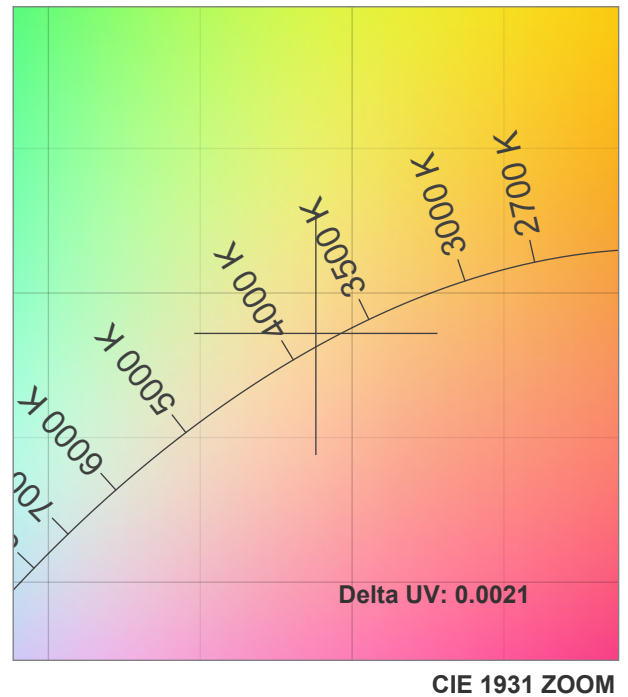
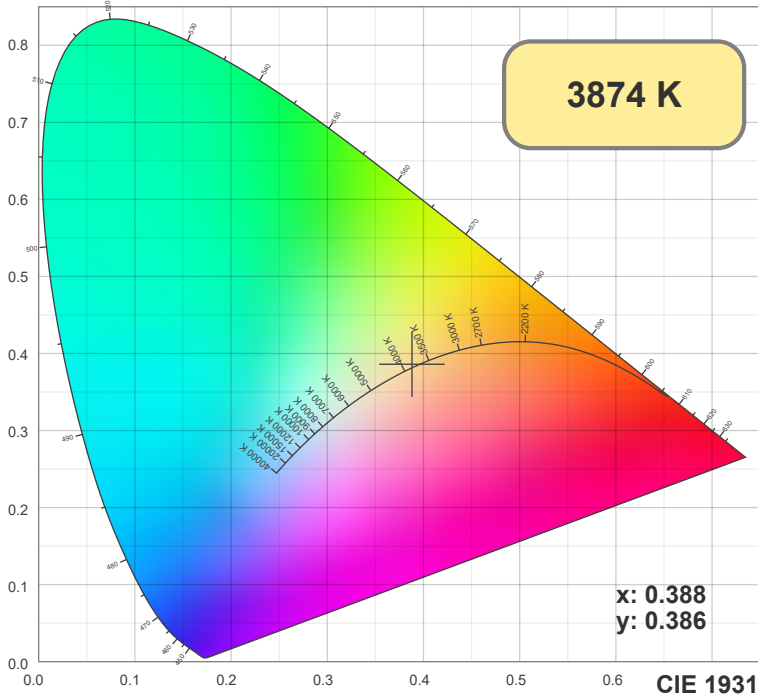
CIE1931

x: 0.388

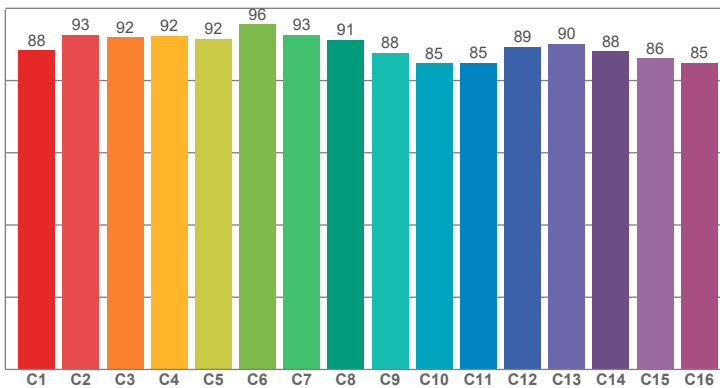
y: 0.386

Spectra

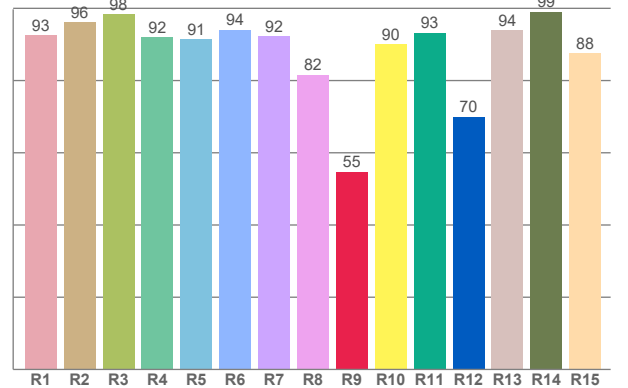




TM30: 89.5



CRI: 92.3 (R1-R8)



CRI R values, only R1-R8 are used to calculate final CRI value

R1	R2	R3	R4	R5	R6	R7	R8	R9	R10	R11	R12	R13	R14	R15
92.52	96.13	98.36	91.91	91.41	94.00	92.26	81.60	54.77	89.98	93.26	69.97	93.85	98.97	87.60

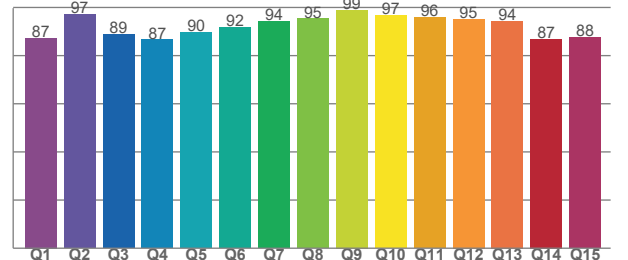
TM30 C values, 16 binned values out of total of 99 C values

C1	C2	C3	C4	C5	C6	C7	C8	C9	C10	C11	C12	C13	C14	C15	C16
88.38	92.64	91.93	92.36	91.53	95.56	92.61	91.31	87.71	84.79	84.95	89.38	90.20	88.04	86.14	84.85

CQS Q values

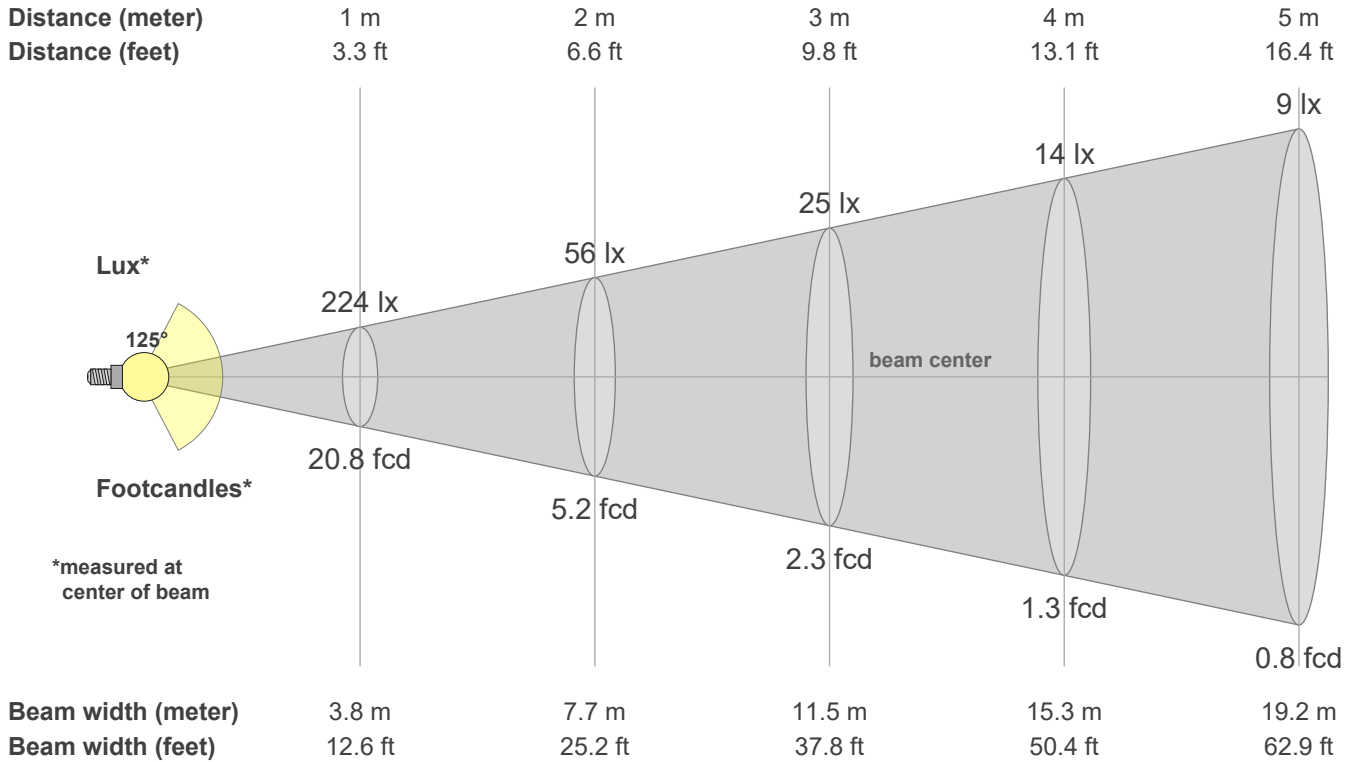
Q1	Q2	Q3	Q4	Q5	Q6	Q7	Q8	Q9	Q10	Q11	Q12	Q13	Q14	Q15
87.37	97.00	88.83	86.59	89.72	91.62	94.12	95.31	98.93	96.71	95.83	95.16	94.36	86.92	87.61

CQS: 91.4



Color parameters

CCT	CRI	CRI R9	TM30 Rf	TM30 Rg	CQS	x	y	u	v	Duv
3874 K	92.3	54.8	89.5	96.7	91.4	0.4	0.4	0.2	0.3	0.0021



Intensities in 0° c-plane

0°	9°	18°	27°	36°	45°	54°	63°	72°	81°	90°	99°	108°	117°	126°	135°	144°	153°	162°	171°
224	222	216	205	191	172	150	127	103	80	60	44	33	26	21	18	15	12	8	4
100%	99%	97%	92%	85%	77%	67%	57%	46%	36%	27%	20%	15%	12%	10%	8%	7%	5%	3%	2%

Intensities in 90° c-plane

0°	9°	18°	27°	36°	45°	54°	63°	72°	81°	90°	99°	108°	117°	126°	135°	144°	153°	162°	171°
224	221	212	197	176	150	120	86	50	18	3	2	2	2	2	2	3	3	3	3
100%	99%	95%	88%	79%	67%	54%	39%	23%	8%	1%	1%	1%	1%	1%	1%	1%	1%	1%	1%

Intensities in 180° c-plane

0°	9°	18°	27°	36°	45°	54°	63°	72°	81°	90°	99°	108°	117°	126°	135°	144°	153°	162°	171°
224	222	216	205	191	172	150	127	103	80	60	44	33	26	21	18	15	12	8	4
100%	99%	97%	92%	85%	77%	67%	57%	46%	36%	27%	20%	15%	12%	10%	8%	7%	5%	3%	2%

Intensities in 270° c-plane

0°	9°	18°	27°	36°	45°	54°	63°	72°	81°	90°	99°	108°	117°	126°	135°	144°	153°	162°	171°
224	221	212	197	176	150	120	86	50	18	3	2	2	2	2	2	3	3	3	3
100%	99%	95%	88%	79%	67%	54%	39%	23%	8%	1%	1%	1%	1%	1%	1%	1%	1%	1%	1%

Beam angle 50%	Field angle 10%	Cutoff angle 2.5%	Intensity ratio in 120° cone	Intensity ratio in 90° cone
124.9°	205.0°	295.2°	62.3%	41.2%