



ジェイダブルシステム
JW-system co.,ltd.

Light efficiency:

103 Lumen/Watt

Light quality:

CRI: 91.2

Color temperature:

6011 K

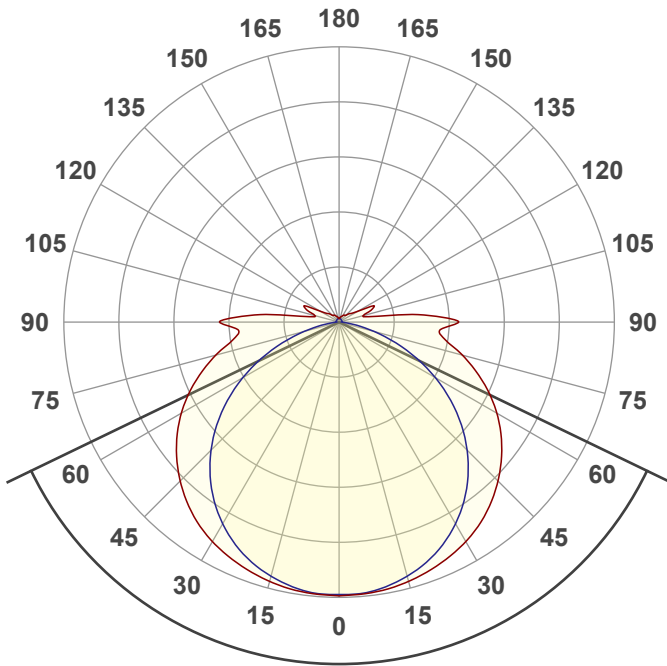
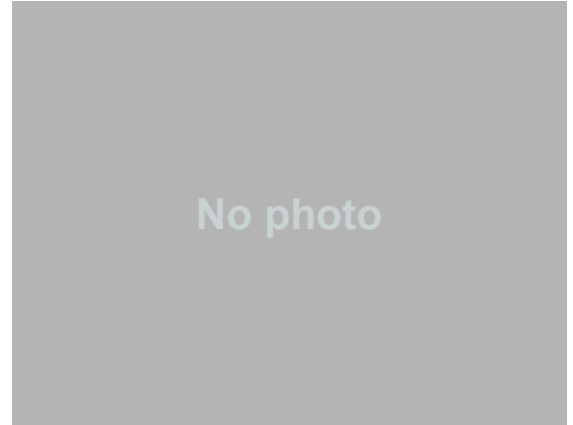
Output: 980 lm

Peak: 250 cd

Power: 9.5 W

24.0V @ 0.396A

12 PLANES



Beam angle

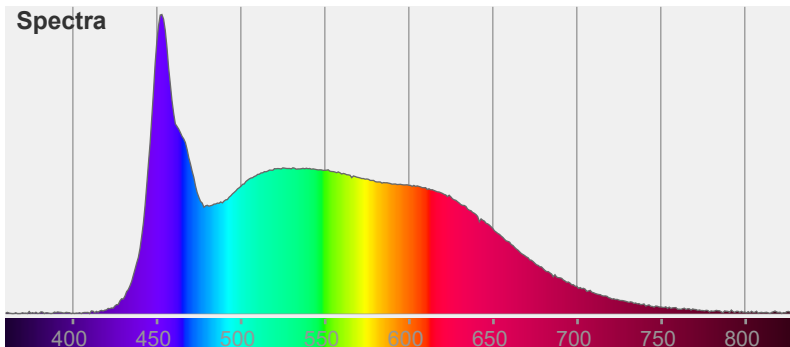
128.4°

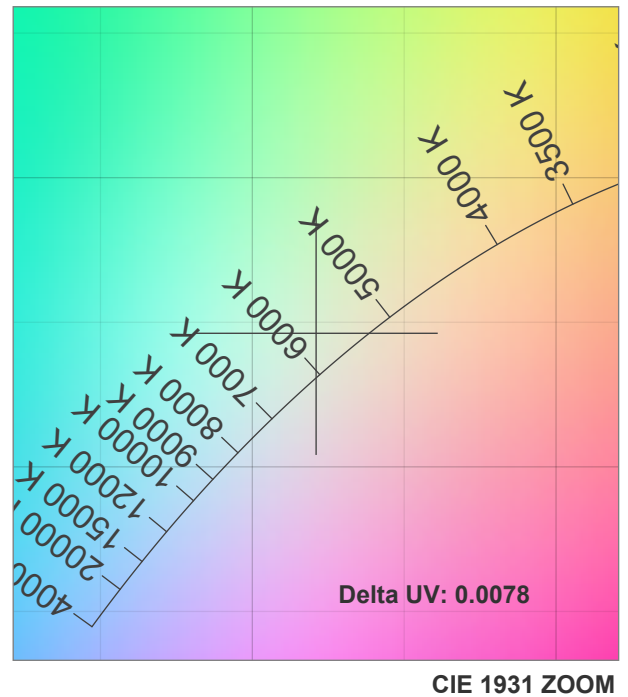
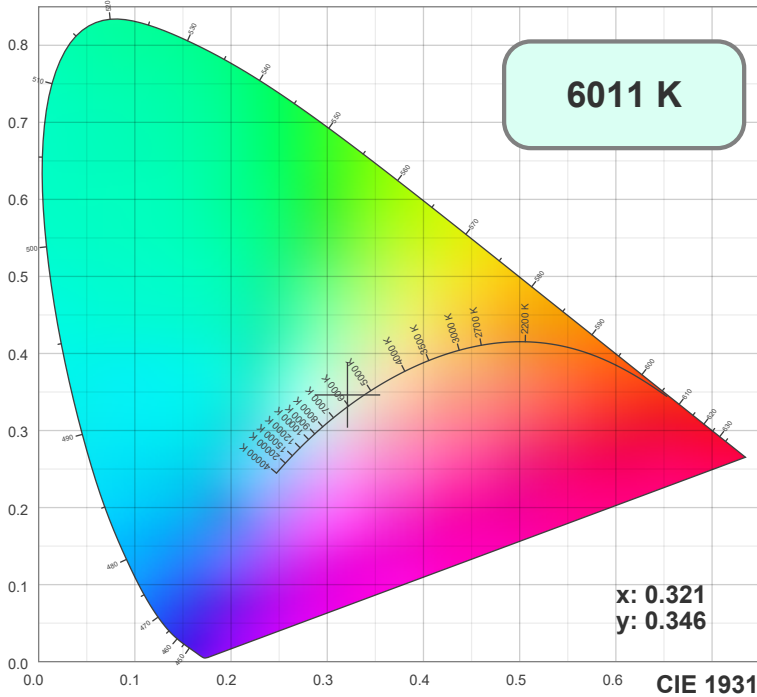
Color



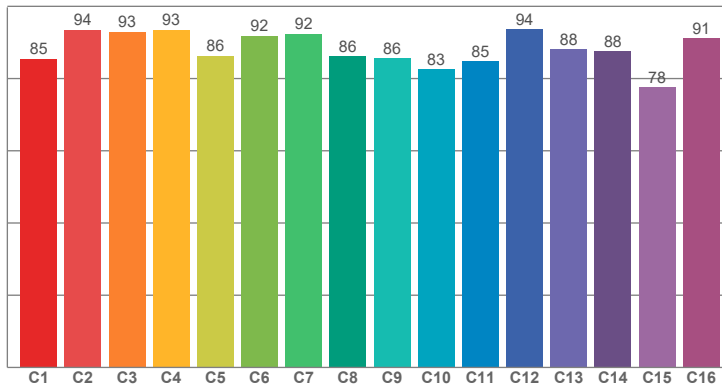
CIE1931
x: 0.321
y: 0.346

Spectra

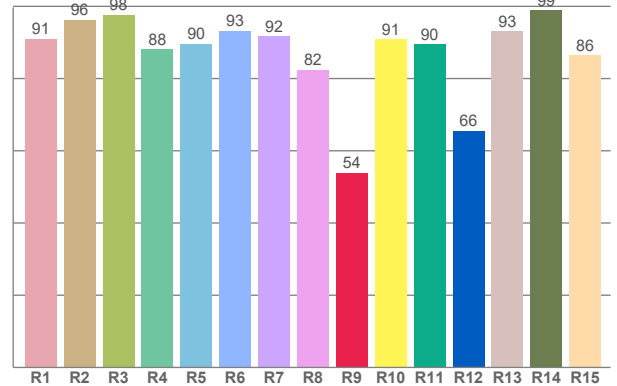




TM30: 88.2



CRI: 91.2 (R1-R8)



CRI R values, only R1-R8 are used to calculate final CRI value

R1	R2	R3	R4	R5	R6	R7	R8	R9	R10	R11	R12	R13	R14	R15
91.06	96.32	97.60	88.04	89.57	93.20	91.63	82.44	53.95	90.82	89.53	65.50	93.08	98.95	86.41

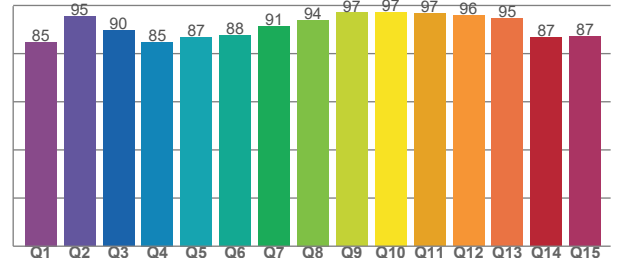
TM30 C values, 16 binned values out of total of 99 C values

C1	C2	C3	C4	C5	C6	C7	C8	C9	C10	C11	C12	C13	C14	C15	C16
85.49	93.53	92.92	93.43	86.36	91.77	92.35	86.11	85.59	82.60	84.84	93.70	88.16	87.61	77.54	91.16

CQS Q values

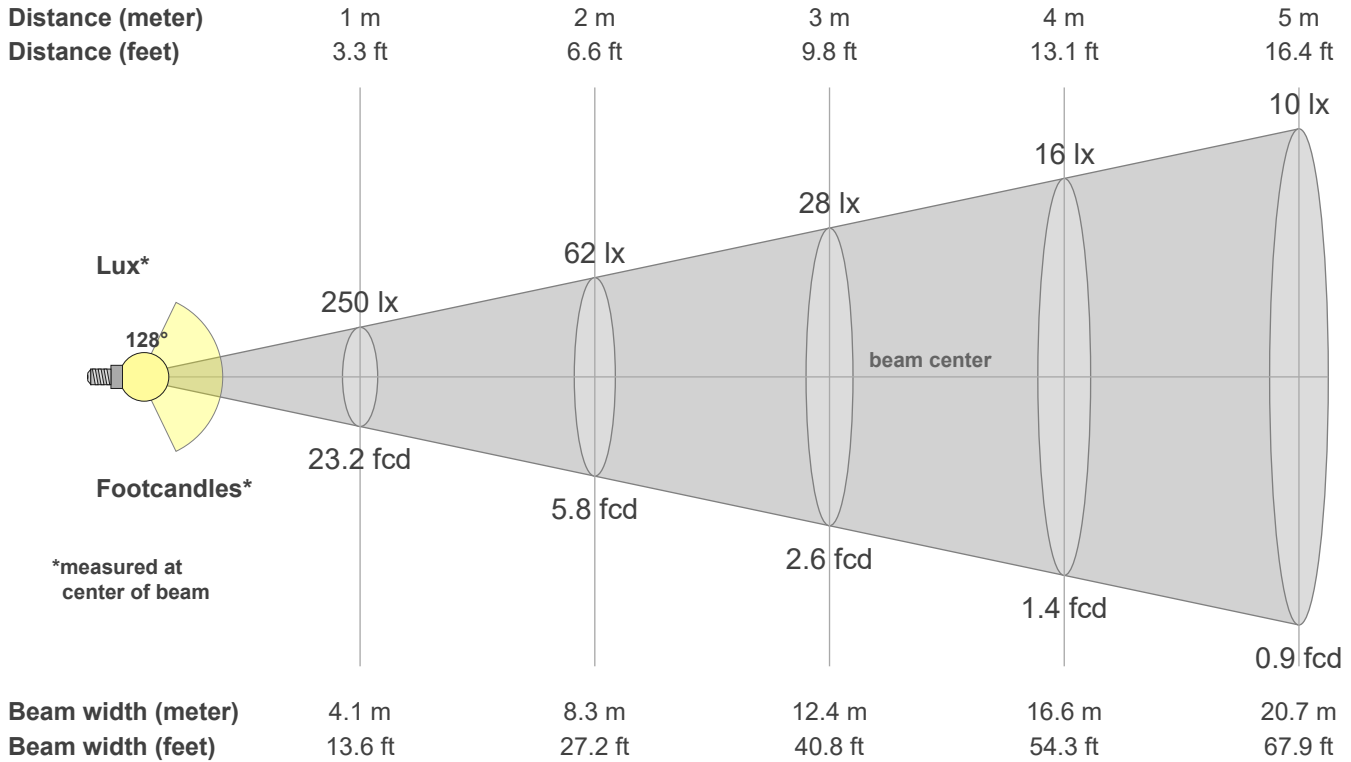
Q1	Q2	Q3	Q4	Q5	Q6	Q7	Q8	Q9	Q10	Q11	Q12	Q13	Q14	Q15
84.77	95.48	89.65	84.75	86.82	87.59	91.19	93.95	96.97	97.28	96.60	95.73	94.59	86.74	87.02

CQS: 90.2



Color parameters

CCT	CRI	CRI R9	TM30 Rf	TM30 Rg	CQS	x	y	u	v	Duv
6011 K	91.2	54.0	88.2	94.8	90.2	0.3	0.3	0.2	0.3	0.0046



Intensities in 0° c-plane

0°	9°	18°	27°	36°	45°	54°	63°	72°	81°	90°	99°	108°	117°	126°	135°	144°	153°	162°	171°
250	248	243	235	223	205	183	157	127	98	108	40	27	30	13	9	8	6	5	4
100%	100%	97%	94%	89%	82%	73%	63%	51%	39%	43%	16%	11%	12%	5%	4%	3%	3%	2%	2%

Intensities in 90° c-plane

0°	9°	18°	27°	36°	45°	54°	63°	72°	81°	90°	99°	108°	117°	126°	135°	144°	153°	162°	171°
250	246	236	220	196	165	129	88	46	14	3	3	3	3	3	3	3	3	3	3
100%	99%	95%	88%	79%	66%	52%	35%	18%	6%	1%	1%	1%	1%	1%	1%	1%	1%	1%	1%

Intensities in 180° c-plane

0°	9°	18°	27°	36°	45°	54°	63°	72°	81°	90°	99°	108°	117°	126°	135°	144°	153°	162°	171°
250	248	243	235	223	205	183	157	127	98	108	40	27	30	13	9	8	6	5	4
100%	100%	97%	94%	89%	82%	73%	63%	51%	39%	43%	16%	11%	12%	5%	4%	3%	3%	2%	2%

Intensities in 270° c-plane

0°	9°	18°	27°	36°	45°	54°	63°	72°	81°	90°	99°	108°	117°	126°	135°	144°	153°	162°	171°
250	246	236	220	196	165	129	88	46	14	3	3	3	3	3	3	3	3	3	3
100%	99%	95%	88%	79%	66%	52%	35%	18%	6%	1%	1%	1%	1%	1%	1%	1%	1%	1%	1%

Beam angle 50%	Field angle 10%	Cutoff angle 2.5%	Intensity ratio in 120° cone	Intensity ratio in 90° cone
128.4°	199.6°	260.9°	62.9%	41.3%