



ジェイダブルシステム
JW-system co.,ltd.

Light efficiency:

99 Lumen/Watt

Light quality:

CRI: 90.0

Color temperature:

2683 K

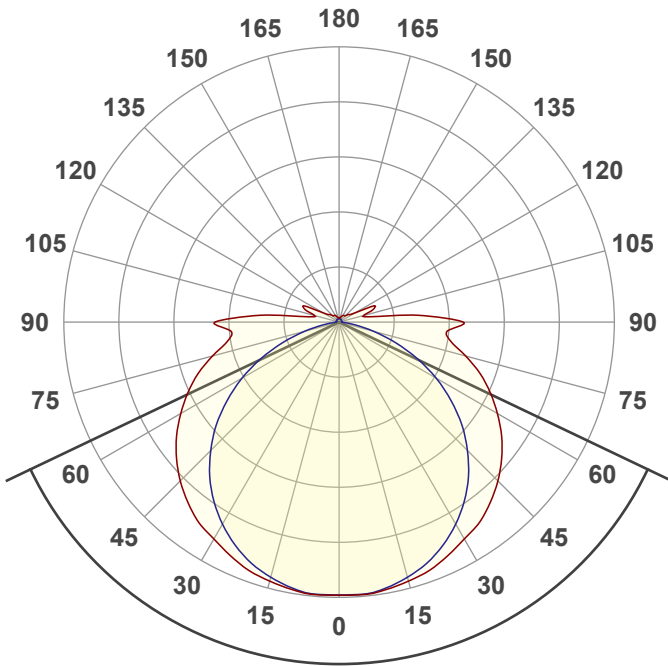
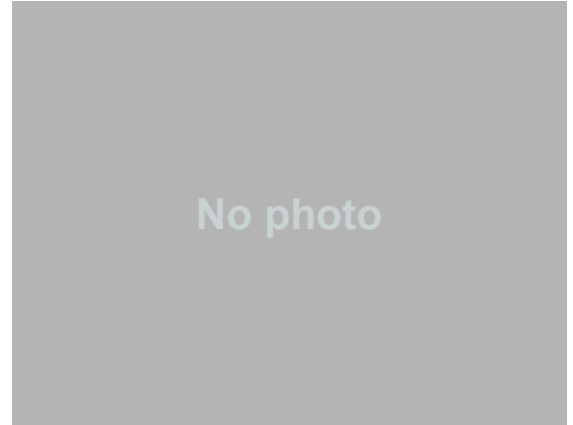
Output: 947 lm

Peak: 242 cd

Power: 9.6 W

24.0V @ 0.398A

12 PLANES



Beam angle

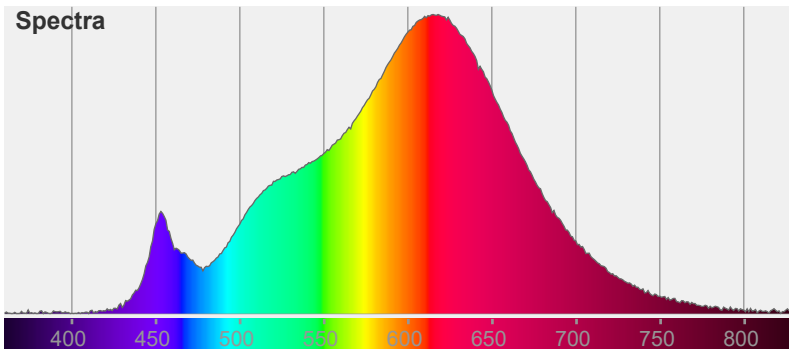
129°

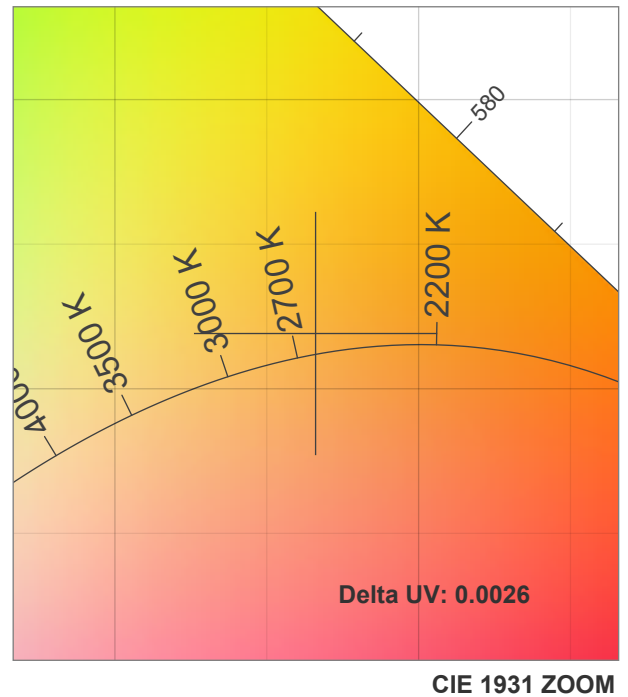
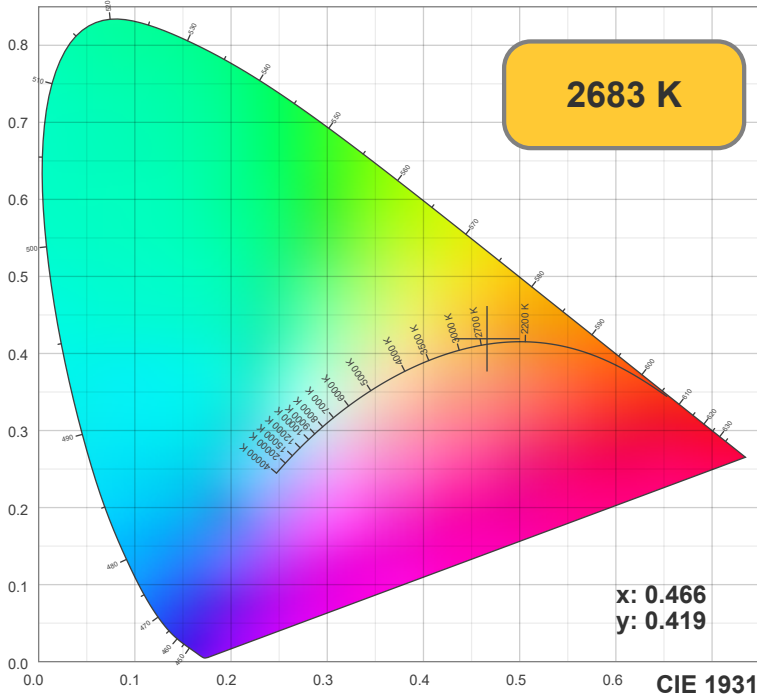
Color



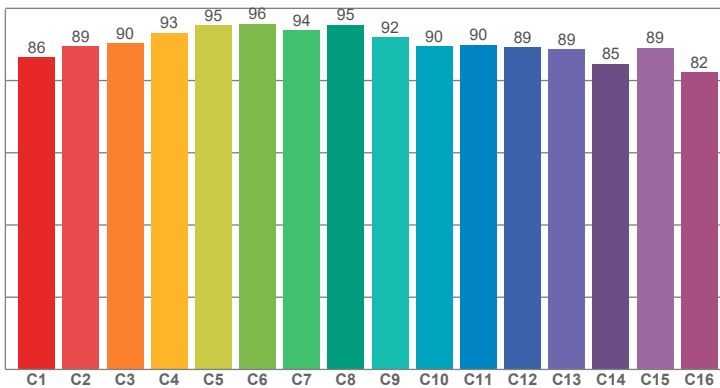
CIE1931
x: 0.466
y: 0.419

Spectra

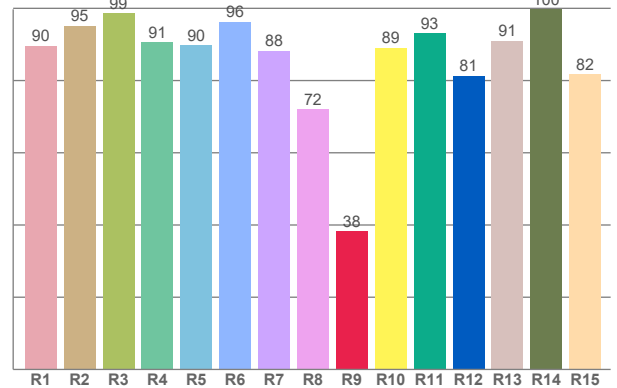




TM30: 90.2



CRI: 90.0 (R1-R8)



CRI R values, only R1-R8 are used to calculate final CRI value

R1	R2	R3	R4	R5	R6	R7	R8	R9	R10	R11	R12	R13	R14	R15
89.57	95.12	98.56	90.57	89.71	96.23	88.25	72.01	38.30	89.02	93.05	81.37	91.07	99.78	81.72

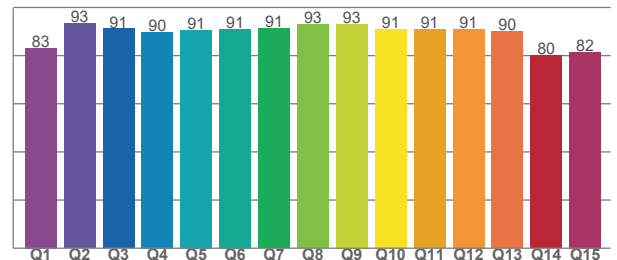
TM30 C values, 16 binned values out of total of 99 C values

C1	C2	C3	C4	C5	C6	C7	C8	C9	C10	C11	C12	C13	C14	C15	C16
86.39	89.47	90.27	93.28	95.33	95.72	93.94	95.45	91.92	89.50	89.90	89.25	88.71	84.70	89.12	82.35

CQS Q values

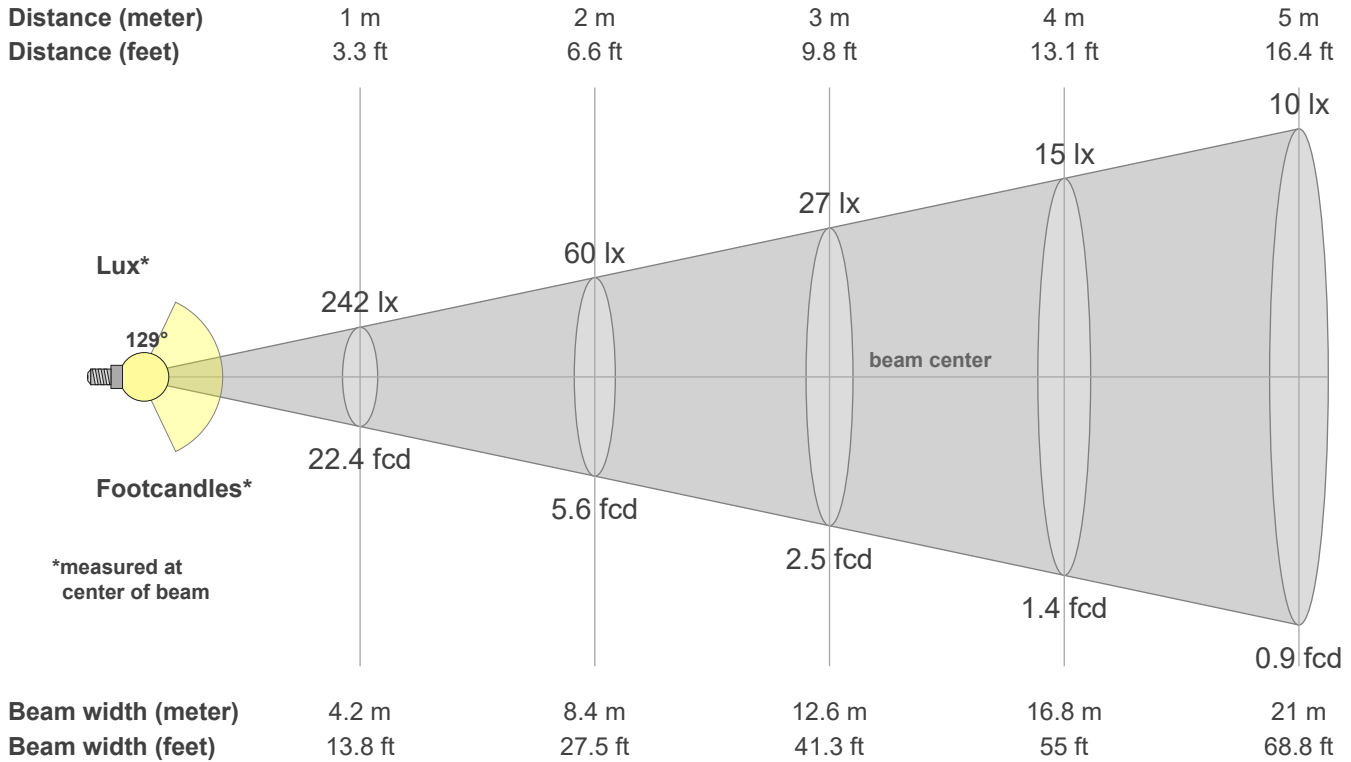
Q1	Q2	Q3	Q4	Q5	Q6	Q7	Q8	Q9	Q10	Q11	Q12	Q13	Q14	Q15
83.18	93.41	91.15	89.74	90.69	91.11	91.29	92.84	93.08	90.99	90.83	91.08	90.11	80.11	81.58

CQS: 88.5



Color parameters

CCT	CRI	CRI R9	TM30 Rf	TM30 Rg	CQS	x	y	u	v	Duv
2683 K	90.0	38.3	90.2	95.8	88.5	0.5	0.4	0.3	0.4	0.0026



Intensities in 0° c-plane

0°	9°	18°	27°	36°	45°	54°	63°	72°	81°	90°	99°	108°	117°	126°	135°	144°	153°	162°	171°
242	240	234	225	214	198	177	153	126	99	109	35	28	27	11	8	7	6	5	4
100%	99%	97%	93%	89%	82%	73%	63%	52%	41%	45%	15%	12%	11%	5%	3%	3%	3%	2%	2%

Intensities in 90° c-plane

0°	9°	18°	27°	36°	45°	54°	63°	72°	81°	90°	99°	108°	117°	126°	135°	144°	153°	162°	171°
242	239	229	212	189	160	125	85	44	13	2	3	2	2	3	3	3	3	3	3
100%	99%	95%	88%	78%	66%	52%	35%	18%	5%	1%	1%	1%	1%	1%	1%	1%	1%	1%	1%

Intensities in 180° c-plane

0°	9°	18°	27°	36°	45°	54°	63°	72°	81°	90°	99°	108°	117°	126°	135°	144°	153°	162°	171°
242	240	234	225	214	198	177	153	126	99	109	35	28	27	11	8	7	6	5	4
100%	99%	97%	93%	89%	82%	73%	63%	52%	41%	45%	15%	12%	11%	5%	3%	3%	3%	2%	2%

Intensities in 270° c-plane

0°	9°	18°	27°	36°	45°	54°	63°	72°	81°	90°	99°	108°	117°	126°	135°	144°	153°	162°	171°
242	239	229	212	189	160	125	85	44	13	2	3	2	2	3	3	3	3	3	3
100%	99%	95%	88%	78%	66%	52%	35%	18%	5%	1%	1%	1%	1%	1%	1%	1%	1%	1%	1%

Beam angle 50%	Field angle 10%	Cutoff angle 2.5%	Intensity ratio in 120° cone	Intensity ratio in 90° cone
129.0°	198.9°	261.6°	62.7%	41.1%